

Walpole Weekly

23rd August, 2023

www.walpole.org.au




Community newspaper proudly published by the Walpole CRC in litter-free Walpole. Made possible by our advertisers and donations.



Philippine Magic gets a new look

BR
Burton Realty

For Sale



87 Jacksonii Avenue, Tingleview, Walpole

This modest practical home is only a few years old, with some finishing touches still to complete inside, this house has been built to modern standards and features two bedrooms and one bathroom. Lifestyle acreage is in the exclusive Tingleview estate is one of the only properties for sale in this sort after subdivision.

This property has a lot to offer which includes:

- 2 bedroom, 1 bathroom weatherboard clad home with high ceilings in the living area.
- Kitchen with wall mounted oven - Tile fire
- Numerous netted fruit trees
- 1x Large water tank

\$525,000

Licensee - Burton One PTY LTD
T/A: Burton Realty
34 Nockolds Street, Walpole, WA, 6398
Office: (08) 9840 1232
info@burtonrealty.com.au
www.burtonrealty.com.au



Ron and Gina in their new premises

I stopped by the Philippine Magic Café on Friday 18th August for a look at the new location that was recently unveiled.

Opened in the morning with a blessing ceremony, by the time I arrived the building was full of people enjoying a coffee while checking out the new space. And the space itself was an impressive one! The open space is warm, flows well and invites a strong sense of community feeling.

continued page 2...



...from front page

Blessing commences...



Ribbon cutting!



As for the menu, all the familiar favourites are there, with a few new editions. I decided on the chicken vindaloo dish, after a warning that it was the spiciest dish on the menu - spoiler alert - it was. (That

wouldn't stop me from recommending it to everyone, though).

Huge congratulations to Ron and Gina! It's safe to say the incredible amount of work they've put in is paying off. I'll definitely be coming back, hope to see you guys there as well!

~Regan Marsh

Thought for the day

Never regret something that made you smile

unknown

Walpole Community Lunches



Thursdays
Time 12 pm
at the Walpole Hotel-Motel
Gold coin donation

RSVP at the Walpole CRC
call: 9840 1395
Email: reception@walpole.org.au



Walpole Community Resource Centre
Your local connection



Walpole Community Resource Centre
Your local connection

Meals on Wheels

We'll deliver to
Walpole, Bow Bridge
and Nornalup!

Contact: 9840 1395
reception@walpole.org.au

Women's Wellness in The Walpole Wilderness Year Plan 2023/2024

<p>April 2023</p> <ul style="list-style-type: none"> • Saturday 29th April Reclaim the Void Weaving 	<p>May 2023</p> <ul style="list-style-type: none"> • Thursday 11th May Worklink - Resume/Cover Letter Writing • Monday 15th May Death Café and The Village Singers • Thursday 18th May Worklink - Interview Prep/Career Guidance • Friday 26th May - Eurythmy 	<p>June 2023</p> <ul style="list-style-type: none"> • Thursday 8th June - Learn About Anxiety • Friday 9th June - Eurythmy • Saturday 10th June Reclaim the Void Weaving • Monday 12th June Manage Stress for Better Health • Monday 19th June Death Café and Shopping - Denmark • Friday 23rd June - Eurythmy • Friday 30th June - Sound Immersion 	<p>July 2023</p> <ul style="list-style-type: none"> • Monday 17th July Death Café and Shopping - Denmark • Thursday 20th July E/Tax MyGov Workshop • Friday 21st July - Qi Gong • Friday 28th July - Qi Gong
<p>August 2023</p> <ul style="list-style-type: none"> • Friday 4th August - Qi Gong • Friday 11th August - Qi Gong • Friday 18th August Menstrual Intimacy Night • Monday 21st August Death Café and Shopping - Denmark • Thursday 31st August Women's Health Forum 	<p>September 2023</p> <ul style="list-style-type: none"> • Saturday 9th September Cloths Swap/Upcycled Visible Mending • Monday 11th September Diffusing Plant Essences • Thursday 14th September MYOB Workshop • Monday 18th September Death Café and Shopping - Denmark 	<p>October 2023</p> <ul style="list-style-type: none"> • Monday 16th October Death Café and Shopping - Denmark • Thursday 19th October eRecord Workshop • Tuesday 24th October Chair Yoga/Pelvic Floor Class • Saturday 28th October Living Essence Bushwalk Discovery • Tuesday 31st October Chair Yoga/Pelvic Floor Class 	<p>November 2023</p> <ul style="list-style-type: none"> • Thursday 2nd November Jin Shin Jyutsu • Saturday 4th November Reclaim the Void Weaving • Tuesday 7th November Chair Yoga/Pelvic Floor Class • Friday 10th November Menopause Mingle • Thursday 14th November Chair Yoga/Pelvic Floor Class • Monday 20th November Death Café and Shopping - Denmark
<p>December 2023</p> <ul style="list-style-type: none"> • Thursday 7th December Online Safety, Shopping, Banking etc 	<p>January 2024</p> <ul style="list-style-type: none"> • Saturday 20th January Reclaim the Void Weaving - FCG 	<p>February 2024</p> <ul style="list-style-type: none"> • Thursday 15th February PRIME Workshop • Monday 19th February Death Café and Shopping - Denmark 	<p>March 2024</p> <ul style="list-style-type: none"> • Thursday 14th March Excel and Publisher • Monday 18th March Death Café and Shopping - Denmark • Thursday 21st March Suicide Prevention Workshop



Government of Western Australia
Department of Communities



Walpole celebrates Father's Day with locally crafted gifts



In the approach to Father's Day, the spotlight shines on the town's artisans and craftspeople, who have come together to offer an array of locally made gifts especially for fathers.

Under the banner of Buy Local, Support Local, makers are showcasing their creativity and one-of-a-kind handmade products that are sure to make Father's Day truly memorable. From handcrafted soaps, jams and preserves to barbecue aprons, fishing bags, scarves, beanies and much more, Walpole Makers Collective have got Father's Day covered, with each gift being a testament to the skill and talent of local makers.

As Sunday 3rd September approaches, celebrate the special men in your life with gifts that embody the essence of our wonderful community. So, let Father's Day be a celebration not just of the bond between fathers and their loved ones but a tribute to the skill, passion and spirit of our talented makers. Choose a locally crafted gift that tells a story and fosters a lasting memory - a true testament to the vibrant and thriving community of Walpole.

Be sure to check out our Father's Day window display. The shop strives to be open Thursday to Sunday from 10am-2pm but is staffed by volunteers.

~Walpole Makers Collective

Old-fashioned games are a hit!



On 8th of August, Walpole Primary School hosted an old-fashioned games night at the Walpole REC Centre. The aim of this was to get families together and investigate STEM learning. (Science, Technology, Engineering, Mathematics)


It started off with the families playing the games. The games included Carrom, Pinball, Carpet Bowls, Scrabble, Pass the Pigs, and many more. It was fun playing games with our friends and families.

And the evening concluded with a shared meal. The dinner included pea and ham soup, pumpkin soup, and rolls with butter. Delicious!

Thank you to the Walpole REC Centre for donating the use of the venue and the Walpole Work Camp for setting up the games. A special thank you to Derek Hoyer for coming out in the rain to explain some of the game rules and the WPS staff.

We are all looking forward to the next Family STEM Night.

~Wren Y 5 and Jasper Y4



www.WalpoleOnline.com

Your 24/7 365 Community Directory
Email: communications@Walpole.org.au

Weekly events

Upcoming Activities

Time	Date	Details
12:45pm	Tuesday 29th August	Bibbulman Track 25th Anniversary beginning at Walpole Visitor Centre
10am	Thursday 31st August	Women's Health Forum with Myrna from Silverchain at Walpole CRC
2pm	Saturday 9th September	Clothes Upcycled/visible mending At Walpole Community Hall
To be advised	Monday 11th September	Diffusing plant essences
To be advised	Thursday 14th September	MYOB workshop
12pm	Monday 18th September	Death Café and shopping - Denmark
12pm to 2pm	Friday 29th September	Jane Kelsbie MLA visits Walpole
6pm	Friday 29th September	Walpole 2023 Bioblitz

PROUDLY SPONSORED BY



VALLEY OF THE GIANTS
TREE TOP WALK



www.treetopwalk.com.au



Department of Biodiversity,
Conservation and Attractions



PARKS AND
WILDLIFE
SERVICE

Weekly events

Day	Details
Monday	<p>Mahjong at Walpole Community Hall, 10am - Noon</p> <p>Mahjong at Nornalup 2pm - 5pm Contact Gail on 0427 689 028 for venue details.</p> <p>Zumba at Walpole Sport and Recreation Centre, 5:30pm - 6:30pm</p> <p>Doctor Services at Walpole Silver Chain by appointment 9840 1173</p> <p>Pilates with Anna-Marie, 20 Bellanger Rd Nornalup. 10.30am fortnightly</p>
Tuesday	<p>Weight Watchers at the Anglican Church Walpole, 9:30am</p> <p>Country Club Scoungers Golf 12:30pm</p> <p>Autumn Club at Walpole Sport and Recreation Centre, 1pm</p> <p>Pilates with Anna-Marie, 20 Bellanger Rd Nornalup. 6.00pm</p>
Wednesday	<p>Basketball for Kids Every Wednesday at the Walpole Sport and Rec Centre - 3pm</p> <p>Tone and Stretch Class at Walpole Sport and Rec Centre, 9 -10am</p> <p>Doctor Services at Walpole Silver Chain by appointment 9840 1173 - Telehealth only 10am - 2pm (Every last Wednesday each month)</p> <p>Walpole Country Club Social Bowls 12:30pm</p> <p>Yin Yoga with Emelie at 20 Bellanger Road, Nornalup 10.30am and 6pm</p>
Thursday	<p>Pathology Pathwest at Walpole Silver Chain 8:30am -11:30am</p> <p>JR Karate at Walpole Sport and Rec Centre 3:15 - 4:15pm</p> <p>Yoga with Jenny Nornalup Hall 5:30pm</p> <p>Arglicare Financial Counselling 1st Thursday every month by appointment - contact CRC</p> <p>Ladies golf 10.30am at Walpole Country Club</p> <p>Pilates with Anna-Marie, 20 Bellanger Rd Nornalup. 10.30am</p> <p>Community Lunch at Walpole Hotel/Motel 12pm</p>
Friday	<p>Walpole Mensed at LIA Miguel Place, Walpole, 9.30am -12:30pm</p> <p>Table Tennis and Games at Nornalup Community Hall, 5 - 7pm</p> <p>Zumba Gold at Walpole Sport and Rec Centre, 9 -10am</p> <p>Craft Group at Walpole Community Hall, 2nd and 4th Friday 9:30am</p> <p>Storytime at Walpole Library 10am (Held fortnightly during school term)</p> <p>Meals on Wheels Delivery</p> <p>Walpole Community Bus trip every second Friday of every month</p> <p>Yin Yoga with Emelie at 20 Bellanger Road, Nornalup 10.30am</p>
Saturday	<p>St Francis of Assisi Catholic Church Service at Walpole, 3:45pm</p> <p>Yoga with Jenny Nornalup Hall 9am</p> <p>Ficifolia Community Garden Market Stall/ Trading Fortnightly 10am – 12 noon</p>
Sunday	<p>St George's Anglican Church Service 10am</p> <p>Ficifolia Gardens Busy Bee 10am, second Sunday of every month -- all welcome</p> <p>Walpole Country Club Scoungers Bowls 12:30 pm</p> <p>Walpole Country Club men's Golf 12pm</p>



Your weekly fOOD and coffee guide



What's on offer in and around Walpole this week...

Bow Bridge Road House 'Homemade burgers, coffee, cakes, fish and chips, liquor and groceries.'	9840 8062
Open Wed-Fri 9am-5pm, Sat-Sun 9am-4pm, closed Mon-Tues	
BP Roadhouse 'food to go—dine in, best coffee!'	9840 1802
Tree Top Restaurant, Tree Top Walk Motel 'a la carte dining!'	9840 1444
Tree Top Walk Motel - a la Carte Dining Friday, Saturday and Sunday nights - 45 Nockolds Street	
Walpole Hotel/ Motel 'Open for Lunch and Dinner 7 days a week'	9840 1023
Open every day Lunch 12pm-2pm, Dinner 6pm - 8pm, Cnr Boronia Ave & South West Hwy, Walpole	

Walpole New Source Borefield Water Abstraction Trial



Environmental Protection Authority

Seven-day comment on new referral

Water Corporation propose to conduct a 6-month water source abstraction trial to assess the long-term viability of a new water source for Walpole, Western Australia. The trial will be conducted during the summer peak water demand period and will use existing infrastructure.

The source comprises three existing deep fractured rock bores located within the following Water Corporation Lots:

- Bore 5/09 is located within the Swan Road reserve
- Bore 3/20 is located within part of Lot on Plan P209284 12737
- Bore 5/20 is located within part of Lot on Plan P064982 86

The abstraction bores will be operated up to 24 hours, seven days a week to produce a total groundwater volume of up to 415 kilolitres (kL)/day at an abstraction rate of up to 4.6 L/s.

At this initial stage of the EIA process, comment is simply sought on whether or not the EPA should assess a proposal and, if so, what level of assessment is considered appropriate.

You can register your opinion at this link: <https://consultation.epa.wa.gov.au/seven-day-comment-on-referrals/walpole-borefield-water-abstraction-trial/consultation/intro/>

~Water Corporation Team

6 - 23rd August, 2023

Women's Wellness in The Walpole Wilderness

AUGUST/SEPTEMBER

- **Thursday 31st August** - Women's Health Forum with Myrna from Silver Chain discussing various health topics, what to look for, advice, wellness help and discussing health resources available to women in Walpole 10am @ Walpole CRC
- **Saturday 9th September** - Cloths Swap/Upcycled Visible Mending 2pm Walpole Community Hall - Bring your unwanted clothing for swaps, your sewing machine if you want to get involved in funky mending, otherwise just come along for a browse and cuppa
- **Monday 11th September** - Diffusing Plant Essences - Christine Palmer
- **Thursday 14th September** - MYOB Workshop, Walpole CRC
- **Monday 18th September** - Death Café & Shopping, Denmark 12 noon

Please book and register your expression of interest via info@walpole.org.au or Ph 9840 1395
Child minding is available on request

A message from the

Walpole Weekly

Got an interesting, funny, or heart-warming story?
We'd **love** to hear it!

Send in your local stories and experiences to
weekly@walpole.org.au
to get them printed in the Walpole Weekly!

We look forward to hearing from you!

Walpole joins WA EV Network



Look what's arrived - an EV charging station in Walpole!

That means electric vehicle (EV) drivers can travel with confidence from Perth to Albany with a new EV fast charger now operating in Pioneer Park.

Benefiting Walpole locals and visitors alike, the new charger provides up to 150 kW and allows drivers to top up in as little as 20 minutes - a back-up 7.6 kW charger is also available.

The continued expansion of the WA EV will help WA reach the State Government's target of net zero carbon emissions by 2050.

The charging station is conveniently located on the northern side of the South Western Highway, opposite the Walpole Town Centre.

Synergy delivered the EV charger and worked with the Shire of Manjimup to ensure a fast and convenient user experience.

The \$21 million WA EV Network is part of the State Government's State Electric Vehicle Action Plan for Western Australia

For more information, visit: <https://www.synergy.net.au/Our-energy/Projects/WA-EV-Network>

~Synergy.net.au



Classifieds

Physiotherapy

Now at
Walpole Silver Chain
0409 745 777

Notice

Walpole Hardware advise change of operating hours.
For the week: 21st to 26th August 2023
Mon - Fri: 9am - 4pm
Sat: 9am - 12pm

For Sale

Honda Quad bike, forman model, tool spray unit mounted - \$8000

4.4m aluminium boat, 40hp Mercury on trailer \$4500

For Sale

2x full sets golf clubs. \$220 per set
Double swag (brand new) \$150
Milenco Caravan Towing Mirrors \$60
Numerous 4WD Accessories
Phone Neville 0414 750 427

Notice

Knife and tool sharpening -
Free pickup and delivery for locals
Chris 0419 930 365

For Sale

Heifers mg first cross \$480
Freisen steers 5-12 months 25 from \$420
0409 109 625



Send all Walpole & Districts
Business & Community
Directory updates to:

tcprojects@walpole.org.au

Update on Westnet Emails



Many Australians could soon incur additional charges to access their emails due to a decision by one of the leading internet service providers to shutter its internal email service. Such a shift might necessitate that users either subscribe to a premium email service or risk forfeiting their long-held email archives and contacts.

TPG Telecom, overseeing service brands like TPG, iinet, internode, and Westnet, recently issued a statement on their site. The company advised users to transition to an email platform managed by The Messaging Company by mid-September. According to the statement, "This step enables TPG to concentrate on refining our primary offerings - internet and mobile."

While TPG commits to covering the first year's expenses when subscribers migrate to The Messaging Company, starting from September 2024, users might have to bear these costs. Alternatively, clients can consider adopting a no-cost email platform, like Google's or Microsoft's, but there's the caveat of potentially misplacing numerous years' worth of emails and contact details.

A 42-day notice will be extended to TPG clients, post which, if they haven't moved to the new platform, their email access might be discontinued. Users who neglect to reinstate their services by November 30th stand to permanently lose access to their email accounts.

For further guidance on the transition, Westnet has created a comprehensive tutorial, available at: <https://help.westnet.com.au/support/westnet-email-messaging-company>.

~Walpole Weekly, with information from ABC News



WANTED / NEEDED

Ficifolia Community Garden is seeking the services of a Tradesman Welder for the purpose of welding lengths of galvansied steel pipe to the legs of the Playground we are working towards erecting in the Children's area of the Garden.

The welding of the legs will need to be certified by a suitably qualified engineer in order to be compliant with the required playground audit.

Please respond to Jenny Willcox 0400 50 40 95 or willcox@walpole.org.au



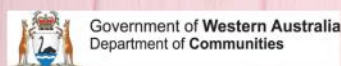
www.WalpoleOnline.com

Your 24/7 365 Community Directory
Email: communications@Walpole.org.au

*Women's Health Forum
with Myrna Belgrove
Registered Nurse*

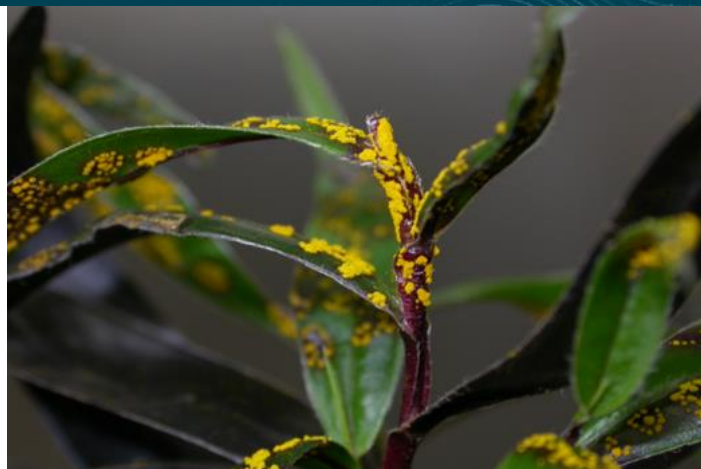
*10:00 am - 12:00 noon
Thursday 31st August
@ Walpole CRC*

- Staying well as you age
- Mental health
- Health checks
- Peri-menopause and menopause
- Cancer screenings





Biosecurity Blitz



Wherever you live and whatever the size of your backyard, you can help protect WA's agriculture, forests, and natural ecosystems into the future.

The Department of Primary Industries and Regional Development's (DPIRD's) Biosecurity Blitz is back in 2023, with a special focus on reporting backyard pests and diseases.

The Biosecurity Blitz aims to protect Western Australia's backyards and agricultural industries from an increasing number of exotic threats, such as the recent incursions of polyphagous shot-hole borer (PSHB), myrtle rust and Queensland fruit fly (Qfly).

By checking your backyard for pests and diseases and reporting what you find, you'll learn about these organisms, help protect your garden, regional biodiversity and the local food and nursery industries in Western Australia.

Every report helps!
Your report helps to increase the likelihood that serious pests and diseases will be detected early, providing the best opportunity to eradicate or contain them.

If your report turns out to be a common pest, that data may be used to support WA's export trade.

Look - snap - report


This year the Biosecurity Blitz runs from 16th October to 16th November - that's 31 days to look for, take a photo, and send in a report of every pest and disease in your backyard.

To participate in the Blitz:

- register at agric.wa.gov.au/biosecurity-blitz
- download the free MyPestGuide® Reporter app
- check your backyard for pests and diseases.
- take photos of any pests or disease signs you find
- report using the app or online at mypestguide.agric.wa.gov.au

Every report gets a response

Let's see what's in your backyard! You will receive a response to your report and a weekly email with pest identification, information on priority plant pests and activities you can do in your backyard.



MEMBERSHIP

New members of the Walpole Community Resource Centre are always welcome.

Membership has benefits! Take advantage of the generous member discounts that apply to many of your CRC's most popular and useful services.

Tel: 9840 1395

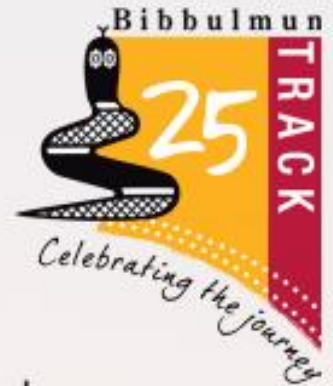


Report your observations

MyPestGuide® Reporter via app or online mypestguide.agric.wa.gov.au
Pest and Disease Information Service (08) 9368 3080 | padis@dpiird.wa.gov.au

You're Invited!

*to a community event to celebrate the
Bibbulmun Track's 25th Anniversary*



Free refreshments, local entertainment and a
Bibbulmun Track historical display.

**Tuesday 29 August 2023 at 3PM
Walpole Hotel Motel**

Welcome the End-to-End walkers as they arrive in Walpole on their
1000 kilometre journey from Kalamunda to Albany.

OR

Join the group for the walk into town!

There are various walk options and a free bus ride to meet them.
Bookings essential. Scan the QR code for more information.



Department of Biodiversity,
Conservation and Attractions



Major supporters:



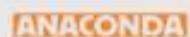
Department of
Local Government, Sport
and Cultural Industries



Premier partner:



Event sponsors:



www.bibbulmuntrack.org.au



Elders

Weaning production & management workshops

- **Optimising your weaning program**
- **Vaccination protocols**
- **Hear from backgrounders and feedlotter**
- **Pasture and silage production**

Wednesday, August 30: Tingledale Hall, Tingledale

Friday, September 1: Frost Park, Mt Barker

Time: 8.30am for a 9am start

Morning tea and lunch provided

Please RSVP by Friday, August 25, 2023

For further information or to RSVP, please contact:

Jai Newman: 0427 920 929 | Tristan King: 0455 151 783

Dean Wallinger: 0428 818 400 | Tiarna Wallinger | 0492 188 524

Elders

ACCOMMODATION & FOOD

THE WALPOLE HOTEL/MOTEL

ROAST DAY

Every Sunday at the Walpole Hotel is Roast Day

Lunch from 12 and dinner from 5

\$20pp **\$15pp**

For a Regular Serve

For a small serve

Regularly Changing Menu so keep an eye out for this weeks options

Bookings advisable, this SELLS OUT FAST

Phone 98401023

There is no A La Carte Menu Sunday Night it's all ROAST

AUTO & MARINE



Walpole UNDER NEW MANAGEMENT & MAINTENANCE
9840 1297

13 Vista Street
WALPOLE WA 6398


For all your vehicle needs:
Light & heavy vehicle servicing,
repairs, tyres, batteries,
4x4 equipment & much more.

08 9840 1297
A/h 0419 863 601

wmt6398@outlook.com
MRB11054

Fees may apply

BUILDING & TRADE



Thinking about SOLAR?

- * SLASH YOUR POWER BILLS
- * 100% quality materials and workmanship
- * Affordable local installer
- * Payback period can be less than 4 years!
- * ON and OFF Grid Power Systems

Call for a FREE, no obligation quote on a Custom Solar
0439 692 555

DSR Energy
Electrical Contractor 11118

DENMARK SOLAR and Renewable Energy
www.dsrenergy.com

ACCOUNTING

DENMARK ACCOUNTING SERVICES

CPA Accountant & Registered Tax Agent

- Income tax, BAS & FBT returns, SMSF & Trust
- Interim & Annual financial statements
- Tax planning & advice
- Reseller of MYOB & Reckon
- Mobile service available

T: (08) 9848 1301
reception@denmarkaccounting.com.au

Unit 7 Palm Court, 63 Strickland St
Denmark WA 6333

CPA Denmark Accounting Services is a CPA Practice & Registered Tax Agent

Peaceful Bay BUILDING SERVICE

- Home Renovations & Extensions
- Sheds Supplied & Erected
- Mini Crawler Crane Hire
- MBA WA Member

www.PeacefulBayBuilding.com

Peter Cox 0407 387 241 peterpbbs@gmail.com
Lesley Cox 0408 917 398 lesleypbbs@gmail.com

When it come to Sheds, We've got you covered

- Carports
- Workshops
- Farm Sheds
- Hay Sheds
- Shearing Sheds
- Livestock Sheds
- Garden Sheds
- Dairy Sheds

Wide Span Sheds
No Compromise Steel Building Solutions.
LOCAL AUTHORISED REFERRAL AGENT



Mini Crawler Crane Hire



TAXATION & ACCOUNTING

For all of your business, personal and SMSF accounting & taxation needs
Steele is regularly in Walpole and happy to meet at your premises or Walpole Lodge.

M: 0429 500 461 P: 9842 9677
E: steele@gmtaxation.com.au
Shop 1, 133 Lockyer Avenue, Albany WA 6330

DENMARK Refrigeration & AIR CONDITIONING

AU18684

Sales, service heating & cooling specialists

E: office@powleyelectrical.com.au
Ph: 08 9848 2026
Unit 2/1058 Middleton St Denmark WA 6333
PO Box 287 Denmark WA 6333

DAIKIN FUJITSU Panasonic

BUILDING & TRADE



Kerry Halse 0427 482 437
Email: halsee@westnet.com.au

BUILDING & TRADE

Andrew Ross Renovations

WARA Lic. 1674

Ph: 0419 194 772

- Asbestos Removal
- House Renovations
- Re-cladding
- Staircases
- Decks • Sheds
- Verandahs
- Re-roofing
- Home restumping



0422301302

Synabplg@gmail.com

PL9679

GF01899

New
Vanities now
on Display

15% off
all Tiles
- t&c's apply



TILES VANITIES SPAS BATHS TAPS SINKS

The Homemart Centre
143 Lockyer Ave, Albany

Phone: 9842 2955

Email: admin@bathroomdecoralbany.com.au



ALLFLOW SERVICES

PL10376 | GF 15084

PLUMBING | GAS | ROOF PLUMBING

All aspects of Plumbing, Gas Fitting
& Roof Plumbing

MARK SCOTT

0408 370 573

admin@allflowservices.com.au



COMMUNITY SERVICES

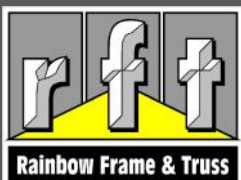
St George's Anglican Church
cnr Vista & Pier, Walpole

All are welcome

Sunday Service 10am



Rev'd Sally Buckley tssf: 0400 101 166
www.denmarkanglican.org.au



17-21 Cockburn Rd
PO Box 5628
Albany WA 6332
Ph: 9842 1533
Fax: 9842 1833
www.rainbowft.com.au

Your suppliers for
Timber Roof Trusses & Wall Frames



Walpole Weekly

Office hours:

Tuesday to Friday
10.30am to 3pm

COMPUTER

When you've tried turning it off and on again...

BarraQDA Computing Solutions



Your *local* IT support in Walpole-Nornalup

- ↳ Track down and fix software and hardware problems
- ↳ Revive your old computer
- ↳ Internet and local networking
- ↳ Computer data backup and security
- ↳ Choose, install and configure the right software for you
- ↳ Save money using Free and Open Source Software
- ↳ Ask me any tech questions

Contact **Jonathan** on 0429 205 215 or jonathan@barraqda.org

EARTHMOVING & GARDENING

J R RUSSELL Earthmoving

ABN 56 925 355 168

22T, 14T, 9T Excavators & Dozer
Front end loader & Tip Truck with Hiab

- ◆ Dams—aquaculture and farm
- ◆ Soaks—new, cleanouts, enlarge
- ◆ Drainage—contour, creek lines
- ◆ Clearing fence lines, roadways
- ◆ Site preparation and levels
- ◆ Rehabilitation
- ◆ Stump removal
- ◆ General excavation work



Local, fully experienced and ticketed operator

Email: 2rusty@iinet.net.au

Phone: Rusty 0427 000 983

EARTHMOVING & GARDENING

EARTHMOVING SERVICE

WALPOLE TO KENT RIVER & SURROUNDING AREAS

Building site preparation, driveways, sand pads.
Gravel & sand supply.
Fire hazard & B.A.L reduction works.
For site assessments & quotes contact

Kim Smith 0447 408 052

E.deepsouth666@hotmail.com

BOW BRIDGE EARTHWORKS

COMPETITIVE RATES, QUALITY ASSURED.
Established 2005.
Also trading as Walpole Sand & Gravel Supply.

TERRY ATKINS Earthworks

Bobcat/slasher 3.8 ton.
Excavator - firebreaks & fuel
reduction.
General Earthwork

Call: 0427 744 014

FREIGHT & AGRICULTURE

IN STOCK NOW



KIOTI  

**TRACTORS
& MACHINERY**
SALES - SERVICE - REPAIRS
FULLY EQUIPPED WORKSHOP
FULLY MOBILE
FINANCE AVAILABLE

CALL
TRENT **0448 415 138**

Locally
Owned & Operated
Servicing the Great Southern

**DENMARK DIESEL &
AGRICULTURAL
REPAIRS**



Southern Forest Machinery

Machinery sales, parts & service - workshop or
mobile

Massey Ferguson, Fendt, KYMCO,
CF Moto, Hardi and more!

11320 South Western Highway, Manjimup

Ph: 9777 2100

www.southernforestmachinery.com.au

Walpole and Nornalup
St John Ambulance
Community Transport
Services



For bookings, call

0447 032 821



RETAIL



WALPOLE VILLAGE GROCER

OPENING HOURS

MONDAY- FRIDAY

7:30AM – 5:30PM

SATURDAY

7:30 – 5PM

SUNDAY

9AM – 5PM

THE BOTTLE-O SHOP

MONDAY – FRIDAY

8AM – 5:30PM

SATURDAY 8AM – 5PM

SUNDAY – CLOSED

Walpole Times to Remember

Walpole CRC

Tue to Fri 9am-4pm

Walpole Nornalup Visitor Centre

Monday-Saturday 9-4pm, Sunday/Public hols
9am-2pm

Library 9840 1108

Wed 9am-12pm and 1pm-3:30pm

Fri 9am-12pm and 1pm-3:30pm,

Sat 9am-12pm

Walpole Weekly

Monday 10am Deadline:

Tues to Fri 10:30am-3pm

Walpole Op Shop

Mon- Fri 9:30am-11:30am; Sat 10am-1pm

St Francis of Assisi Catholic Church

Sat 3:45 pm

St George's Anglican Church

Sun 10am

Walpole Waste Transfer Station

Tues and Thu 1pm-5pm; Sun 9am-5pm

Peaceful Bay Refuse Site

Wed 9am-1pm; Sun 1pm-4:30pm

VETERINARY & ANIMAL CARE



Denmark Vet Hospital & Paws Surgery Services

Small animal consultations at Walpole Community Garden every Wednesday by appointment. Farm animal visits available including equine health, cattle ultrasound pregnancy testing and bull testing. Contact Denmark Vet Hospital for all your pet and livestock health needs.

Dr Richard Reynolds | Dr Claudia O'Connell | Dr Nina Bradshaw

8 Welsh Street, Denmark, 6333 | (08) 9848 1389

denmarkvethospital.com.au



LEGAL AID WESTERN AUSTRALIA

Work off your court fines

You may be eligible for the work and development permit if you are:

- Experiencing financial hardship
- Have been or might be subjected or exposed to family violence
- Have a mental illness
- Have a disability
- Are homeless
- Are experiencing alcohol or drug use problems

Ask Us How

9840 1395



24 Latham Avenue, Walpole

A message from the
Walpole Weekly

Got an interesting, funny, or heart-warming story?
We'd **love** to hear it!

Send in your local stories and experiences to
weekly@walpole.org.au
to get them printed in the Walpole Weekly!

We look forward to hearing from you!



OBR
GROUP

Refrigeration • Air Conditioning • Electrical

FUJITSU

AUSTRALIA'S FAVOURITE AIR®

*Weekly visits to
Walpole from Denmark*

Ph. 98 421 072

admin@obr.net.au