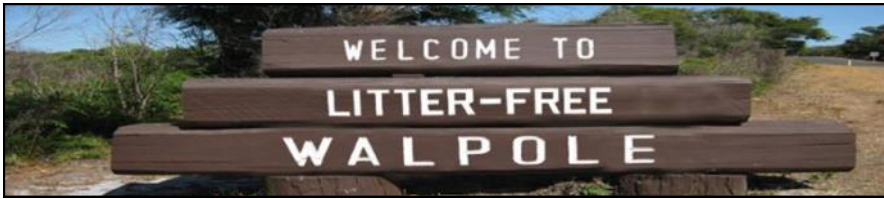


# Walpole Weekly

27th March, 2024

www.walpole.org.au



Community newspaper proudly published by the Walpole CRC in litter-free Walpole. Made possible by our advertisers and donations.



## Walpole CRC Celebrates the Women's Wellness in the Walpole Wilderness Project

### Women's Wellness in the Walpole Wilderness Year Plan 2023/2024

Well that's a wrap ladies. The Department of Communities Women's Grant has come to an end. The grand finale was held on Sunday night with Emelie Coffey at the helm of our chakra journey. The full moon was spectacular and the energy amongst the 16 women who attended was peaceful.

Reflecting on the Women's Workshops in the Walpole Wilderness (WWW) journey over the last year fills me with joy. I was incredibly lucky to be part of every workshop so I got to see the impact it had on every woman that attended and I got to experience what they experienced.

Everyone was grateful for the opportunity to have such an array of workshops in Walpole which was shown through smiles, hugs, tears, laughs and many cups of tea. I was pleasantly surprised by the gifted and talented women in our community who came forward to run these workshops and the knowledge that they had to share was invaluable. We employed local women who were all fabulous and were inspiring to all who attended. We loved you all, you were amazing and we are grateful to have attended your workshops.

I was awed by the real need for women to come together in a community to share, support and care for one another. Sometimes it's easy to isolate ourselves and be blissfully peaceful on our own or be so consumed by life that we don't take time out for ourselves - but when we get to be amongst our beautiful sisters the joy, growth and knowledge that comes is exquisite.

*continued page 2...*



...from front page



We have shared so much over the last 12 months but it has not ended here. Women are being inspired to share and come together more often with new groups popping up everywhere. So watch out for more exercise classes, community group chats and CRC workshops.

A huge thanks to the Walpole CRC for providing their wonderful services, venues and staff to run the workshops. Thanks to the Department of Communities for the grant giving.

So all that's left now is to reflect on what's been and gone, cherish the growth and love of this wonderful community that we live in and get the acquittal done.

Thanks to the lovely ladies and gents who supported these workshops, for without you it would not have been such a huge success.

Thanks kindly and love always.

~Nicole Munro



**WANTED**



**WHO IS RUBY ROVING?  
IF YOU HAVE ANY INFORMATION,  
PLEASE CONTACT  
WEEKLY@WALPOLE.ORG.AU**

## Classifieds

### Physiotherapy

Now at  
Walpole Silver Chain  
0409 745 777

### Wanted to buy

Approximately 10 Rolls of Barley Straw  
Call Shane on 0437 780 186

Leave a message if not answered

### For sale

Nissan Patrol 4.22 Turbo Diesel POA  
Olympus Digital Camera E-MS Mark 2 \$900  
Lumex Camera \$250  
Phone Annette 0481 591 352

### Classifieds

WACO GFX Camping fridge.  
Good working condition.  
\$500 firm  
0427 049 219



**URGENT RURAL LISTINGS WANTED!!**

Burton Realty has clients wanting to purchasing rural blocks in our area, if you were thinking about selling now is the time, call us today for a **FREE** market appraisal, with no obligations to sell.

You may be pleasantly surprised with what your property is currently worth in the current market.

Licensee - Burton One PTY LTD  
 T/A: Burton Realty  
 34 Nockolds Street, Walpole, WA, 6398  
 Office: (08) 9840 1232  
 info@burtonrealty.com.au

## The Walpole Family Centre Association and Committee



The Walpole Family Centre is a community-run Child Care Centre. This means that the Centre is run by a Management Committee, who are elected by members of

the Walpole Family Centre Association, each year, at our AGM.

What is the Walpole Family Centre Management Committee?

The Walpole Family Centre relies on the skills, knowledge and enthusiasm of association members who volunteer to serve on the committee of management. The Management Committee is the legal operator of the centre and is responsible for ensuring that our centre operates according to our constitution, relevant legislation, and national regulations and standards. Committee members must also satisfy Working with Children checks and Police background checks. It is the Committee's responsibility to employ a Centre Director, child care educators and auxiliary staff, and to ensure that these employees are provided with a supportive work environment, to allow them to deliver the best possible education and care service for the children of Walpole.

The 2024 committee members are Chairperson Trudi Miles, Secretary Emily Webster, Treasurer Seren Rose, and General Committee Members Chris Webster, Jonathan Schultz and Hannah Logan.

What is the Walpole Family Centre Association?

Parents and carers of children who use our service, and other interested community members, are welcome to become members of the Walpole Family Centre Association. It is the members of the association that elect the committee of management. As part of our 2024 membership drive, we are offering membership of the Walpole Family Centre Association for just \$1! Membership forms are available from the child care centre and the CRC, or you can email us at [wfc.committee@gmail.com](mailto:wfc.committee@gmail.com) and we'll send one to you.

*continued page 4...*



For friendly and professional legal advice in the following areas of law:

- **FAMILY LAW** including divorce, property settlements and child matters
- **COMMERCIAL LAW** including leases and commercial contracts
- **CIVIL LITIGATION** including breach of contract and debt collection
- **PROPERTY LAW**
- **SETTLEMENTS** with lawyers available to sort out any issues that you may encounter
- **WILLS**
- **PROBATE AND LETTERS OF ADMINISTRATION APPLICATIONS**
- **ESTATE ADMINISTRATION**

Address: 55 Strickland Street, Denmark, WA  
 Phone: 9848 3908  
 Email: [hfm-denmark@hfmlegal.com.au](mailto:hfm-denmark@hfmlegal.com.au)

...from page 3

Supportive parents, dedicated educators, and a fine community spirit make the Walpole Family Centre a wonderful place for our children to learn and grow. We look forward to welcoming more members to our Association, to build this community and help us as we continue on our journey of becoming the best Child Care Centre we can be.

~Seren Rose, for the Walpole Family Centre Management Committee



#### Holiday Accommodation Easter School Holidays 2024

A renovated retro 60's private holiday home overlooking the inlet is open to expressions of interest as a holiday let preferably on a weekly basis.

The 3x1 home is fully furnished and equipped and sleeps six - 2xQueen + 2 single beds

Enquiries: 0457 439 810

## Walpole Times to Remember



### Walpole CRC

Tue to Fri 9am-4pm

### Walpole Nornalup Visitor Centre

Monday-Friday 9-5pm, Saturday 9-3 Sunday 9-1pm.

### Library 9840 1108

Wed 9am-12pm and 1pm-3:30pm

Fri 9am-12pm and 1pm-3:30pm,

Sat 9am-12pm

### Walpole Weekly

Monday 10am Deadline:

Tues to Fri 10:30am-3pm

### Walpole Op Shop

Mon- Fri 9:30am-11:30am; Sat 10am-1pm

### St Francis of Assisi Catholic Church

Sat 3:45 pm

### St George's Anglican Church

Sun 10am

### Walpole Waste Transfer Station

Tues and Thu 1pm-5pm; Sun 9am-5pm

### Peaceful Bay Refuse Site

Wed 9am-1pm; Sun 1pm-4:30pm

# THE BIG HAIR SHOP



## OPEN

The Big Hair Shop  
has returned to normal hours.

Please make sure to book  
a phone appointment.

### 9840 1777

Thank you for your  
continued support.



Same day parcel pick-up and delivery  
between Denmark, Walpole & surrounds

Ph: Abie 0477 739 833

Email: [admin@denmarkdeliveries.com.au](mailto:admin@denmarkdeliveries.com.au)

Website: [denmarkdeliveries.com.au](http://denmarkdeliveries.com.au)

\*Businesses contact us for your special requirements\*

## FREIGHT AND TRANSPORT

27t TIPPER

STOCKCRATE

45 FT FLATTOP



STOCK, HAY, LIME AND FERT,  
SERVICING WALPOLE AND THE  
SURROUNDING AREAS

FOR ANY ENQUIRIES CALL ADAM :  
0427770682

## Peaceful protest in Nornalup



On Saturday 23rd March between 150 and 200 people gathered in Nornalup to protest the planned prescribed burn of 80 hectares of ancient, mostly long unburnt, Tingle Forest.

Many Denmark and Walpole residents supported Nornalup residents calling for this burn to be cancelled as Tingle Forests are found nowhere else in the world and are home to many threatened species, including mainland quokkas.

The Tingle trees, some of which are hundreds of years old, cannot tolerate repeated burning as fire gets into their bases, causing collapse of the old giants. This occurred as recently as last December in a nearby prescribed burn.

The Denmark Environment Centre (DEC) and Fire and Biodiversity WA (FaBWA) have been calling for an independent review of broad-scale prescribed burning practices for several years as they are clearly causing degradation and decline of forests and other ecosystems in our National Parks and conservation reserves. These fires are too big, too hot, and too frequent.

DEC and FaBWA, along with the WA Forest Alliance (WAFA), are calling on the WA government to act now and bring about change to the way these burns are planned and conducted. There are alternatives to the current practices, such as rapid detection and suppression, and increased resourcing of bushfire mitigation strategies around homes and towns. Observations and research show that burning Tingle forest increases flammability as it stimulates growth of dense understoreys.

~Bart Lebbing

*The Walpole Weekly will only publish responses to this for the next two issues only.*

~Regan Marsh

**TREE TOP WALK MOTEL and RESTAURANT**



**SITUATION VACANT**

Tree Top Motel is seeking staff to fill vacancies in our Housekeeping Team.

5 days / week—3 / hours Monday—Friday  
Above Award rates

Apply directly with resume

45 - 50 Nockolds Street, Walpole  
treetopmotel@westnet.com.au  
+61 8 9840 1444 / 0448 124 693

## For Sale

17 foot caravan.  
Not registered, used for spare room.  
Good condition and nice inside with a double bed.

All electrical in working order.

\$1600

0427 647 403



**walpole pharmacy**

## **WALPOLE PHARMACY 2024 EASTER TRADING HOURS**

**GOOD FRIDAY 9-12pm**

**EASTER SAT 9-12pm**

**EASTER SUNDAY 10-1pm**

**EASTER MONDAY Closed**



**Have a SAFE & HAPPY Easter  
Phone 9840 1127**

# Weekly Upcoming Activities

Time	Date	Details
8am to 1pm	Saturday March 30th	Easter Market at Walpole Pioneer Park
9am to 3pm	Wednesday April 3rd	Denmark Animal Farm School Holiday Programme \$35 RSVP 9840 1395
9am to 4pm	Friday April 5th	Pemberton Tram and Arial Adventure School Holiday Programme \$35 RSVP 9840 1395
9.30am to 11am	Wednesday April 10th	Bubbles with Gertrude Wellease School Holiday Programme \$5 RSVP 9840 1395
10am to 12pm	Wednesday April 10th	Free Play in Walpole Pioneer Park
10am to 12pm	Friday April 12	Walpole Library Free STEM workshop "MAGNET MAGIC" Ages 6+ RSVP 9840 1108
8.30am to 10am	Monday April 22nd	Qi Gong Workshop at Walpole Community Gardens

PROUDLY SPONSORED BY



VALLEY OF THE GIANTS  
TREE TOP WALK



[www.treetopwalk.com.au](http://www.treetopwalk.com.au)



Department of Biodiversity,  
Conservation and Attractions



PARKS AND  
WILDLIFE  
SERVICE

# Weekly events

Day	Details
<b>Monday</b>	<p><b>Mahjong</b> at Walpole Community Hall, 10am - Noon</p> <p><b>Mahjong</b> at Nornalup 2pm - 5pm Contact Gail on 0427 689 028 for venue details.</p> <p><b>Zumba</b> at Walpole Sport and Recreation Centre, 5:30pm - 6:30pm</p> <p><b>Doctor Services</b> at Walpole Silver Chain by appointment 9840 1173</p> <p><b>Pilates</b> with Anna-Marie, 20 Bellanger Rd Nornalup. 9am - \$20</p> <p><b>Pickleball</b> 9.30am-11.30am at Walpole Rec Centre</p>
<b>Tuesday</b>	<p><b>Weight Watchers</b> at the Anglican Church Walpole, 9:30am</p> <p><b>Country Club Scroungers Golf</b> 12:30pm</p> <p><b>Autumn Club</b> at Walpole Sport and Recreation Centre, 1pm</p> <p><b>Pilates</b> with Anna-Marie, 20 Bellanger Rd Nornalup. 6.00pm</p> <p><b>Pilates</b> with Anna-Marie, Walpole Community Hall</p>
<b>Wednesday</b>	<p><b>Tone and Stretch Class</b> at Walpole Sport and Rec Centre, 9 -10am</p> <p><b>Doctor Services</b> at Walpole Silver Chain by appointment 9840 1173 - Telehealth only 10am - 2pm (Every last Wednesday each month)</p> <p><b>Walpole Country Club Social Bowls</b> 12:30pm</p> <p><b>Yin Yoga with Emelie</b> at 20 Bellanger Road, Nornalup 9am and 6pm</p>
<b>Thursday</b>	<p><b>Pathology Pathwest</b> at Walpole Silver Chain 8:30am -11:30am</p> <p><b>JR Karate</b> at Walpole Sport and Rec Centre 3:15 - 4:15pm</p> <p><b>Yoga with Jenny</b> Nornalup Hall 5:30pm</p> <p><b>Angicare Financial Counselling</b> 1st Thursday every month by appointment - contact CRC</p> <p><b>Ladies golf</b> 10.30am at Walpole Country Club</p> <p><b>Pilates</b> with Anna-Marie, Walpole Community Hall 9am</p> <p><b>Community Lunch</b> at Walpole Hotel/Motel 12pm</p>
<b>Friday</b>	<p><b>Walpole Mensed</b> at LIA Miguel Place, Walpole, 9.30am -12:30pm</p> <p><b>Table Tennis and Games</b> at Nornalup Community Hall, 5 - 7pm</p> <p><b>Zumba Gold</b> at Walpole Sport and Rec Centre, 9 -10am</p> <p><b>Craft Group</b> at Walpole Community Hall, 2nd and 4th Friday 9:30am</p> <p><b>Storytime</b> at Walpole Library 10am (Held fortnightly during school term)</p> <p><b>Meals on Wheels Delivery</b></p> <p><b>Walpole Community Bus trip</b> every second Friday of every month</p> <p><b>Yin Yoga with Emelie</b> at 20 Bellanger Road, Nornalup 9am</p> <p><b>Pickleball</b> 10am-12pm at Walpole Rec Centre</p>
<b>Saturday</b>	<p><b>St Francis of Assisi Catholic Church Service</b> at Walpole, 3:45pm</p> <p><b>Yoga with Jenny</b> Nornalup Hall 9am</p> <p><b>Ficifolia Garden Together 3-5pm</b> All Welcome</p>
<b>Sunday</b>	<p><b>St George's Anglican Church Service</b> 10am</p> <p><b>Ficifolia Gardens Busy Bee</b> 10am, second Sunday of every month -- All Welcome</p> <p><b>Walpole Country Club Scroungers Bowls</b> 12:30pm</p> <p><b>Walpole Country Club Men's Golf</b> 12pm</p>

# We welcome your opinion

The *Walpole Weekly* values freedom of expression and welcomes contributions and feedback from readers via letter or email on any topic of community interest:

- 1) All content submitted for publication must provide full name and contact details.
- 2) The Walpole CRC will no longer print anonymous letters.
- 3) Any content published may be edited to enhance flow, clarity, spelling, and grammar—not facts or meaning—therefore the writer should carefully check facts and consider their choice of words.
- 4) Should content be deemed by the Editor to be too long (**should be no more than 250 words**), incomprehensible, libelous, illegal, or incite a sensitive issue, then it will not be published.
- 5) In the case of content being rejected, the writer/s will be notified of the decision by the Editor.
- 6) Should the writer dispute the Editor's decision they should take it up in writing with the Management Committee of Walpole CRC.
- 7) The Management Committee will make the final decision on whether or not to publish the content in the next available edition of the *Weekly*.

~Diana Smith

## WHAT'S THE WORD?



EASTER: \_ U \_ \_ \_

YOU LOOK FOR: \_ \_ \_ s

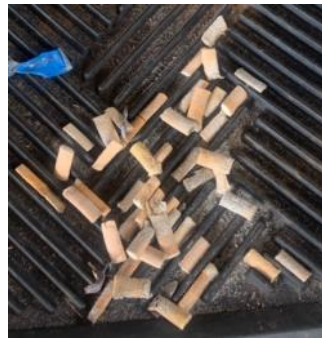
YOUR EGGS ARE MADE OF : \_ \_ \_ \_ \_ L \_ \_ \_



What picture can you make with this shape?



# Letter to the Editor



Cigarette butts are litter and as small as they might seem, carry with them a heavy burden. Not only do they mar the beauty of the beach, but they also pose a significant threat to marine life and the health of the oceans. Made from non-biodegradable materials, they leech harmful chemicals into the sand and water, impacting the delicate balance of marine ecosystems. Fish, birds, and other wildlife, mistake them for food, ingest these poisonous relics, leading to dire consequences for their health and survival.

Did you know that in Western Australia the Litter Act 1979 (WA) governs littering behavior, with Keep Australia Beautiful Council WA responsible for managing litter control and prevention. Fines can be issued for littering cigarette butts.

So, to the lovely people down at the Peaceful Bay beach who sit in their vehicles in the afternoon and enjoy the beautiful environment, please stop dropping these butts onto the beach.

Thanks kindly

~Nicole Munro

## EASTER

```

K S C A N D Y O R N W E A S T E R E L P R U P
T R E A T S E H I C I S W R K R E A S L C Q Q
O Z S H E X C W V I E S T M C Z Z X U D H R K
J K N H U P L C B R X L E P G P S A N P I D B
R X A U O N T A Z F E O E O U Y S I D B C A L
A Z E N O T T C H S M U X B O D O S A P K F G
O B B T W M C B C Y I L J Y R S R G Y A E H L
D C Y L Y A Q R L C H U R C H A C G I L T C X
Y N L P O M P P O K Q G H Z A F T E F X A R B
R A L H U N H O S S B X X S D Y S E V V R A K
C T E X G Q K I L P S A C R J O A L Y E O M X
O S J V S E M I K G R B S P S W E E T S C Y D
K V C H O C O L A T E I U K I A N B V L E N B
L C D M G R X U P T O T N N E P Y J B G D N U
B L L R O F I J M A Z P U G S T A W K Z D U R
L B E W E H H E G Z X C I S R E W O L F P B P
    
```

Find the following words in the puzzle.  
Words are hidden ↑ ↓ → ← and ↘ .

BASKET  
BUNNY  
CANDY  
CELEBRATE  
CHICK  
CHOCOLATE  
CHURCH

CROSS  
DECORATE  
EASTER  
EGGS  
FLOWERS  
HOT CROSS BUNS  
HUNT  
JELLYBEANS

MARCH  
PURPLE  
SPRING  
SUNDAY  
SWEETS  
TREATS

## Year of the Wood Dragon



Did you know that the Rooster is the lucky charm for this year, Chinese Year of the Wood Dragon?

Or that taking better care of our liver and gallbladder may help us to enjoy the year better?

Or that Qi Gong is a really cheap and easy way to move energy through your body, which is always important and what the Year of the Dragon is asking us to do more of?

Last week a group of women gathered in the Community Gardens to learn about Traditional Chinese Medicine and the Year of the Dragon from our resident Traditional Chinese Medicine practitioner; Rosemarie Warnock.

It was so interesting to learn more about this form of therapy and have an opportunity to talk about things going on in our own lives so that Rosemarie could speak about them from a TCM perspective.

We learned about the mystical nature of the Dragon in the Chinese Zodiac and how we are supported this year to move forward with those projects that we have been putting off for way too long.

We all received a little stone rooster trinket to carry around with us this year which is a happy reminder of all that we learned.

It was lovely to get together with some familiar faces as well as meet some new people in town. I am very much looking forward to the next gathering on the 22nd April, to learn more and to practise Qi Gong together.

*~Sandra Walker*

## Age without getting old!



Being strong and energetic as well as having a full range of movement is not unrealistic. Your body was designed to move. Most people rust out and do not wear out, the adage “use it or lose it” is very relevant.

Pilates was developed by Joseph Pilates to promote wellness and assist in rehabilitation. The main objective is to re-build your core strength giving you back control over your body as well as creating flexibility through a full range of movements.

Imagine going through the day without the normal aches and pains, being able to engage in the physical activities you love, without the inevitable side effects. Having the energy to enjoy what you are doing is priceless.

Pilates is a no age barrier or physical condition activity, suited to those who have never done a class right up to very advanced practitioners.

The main benefits are:

Improved core strength - avoid losing your balance and feel stronger.

Flexibility through stretching with control - muscles and tendons supple and strong.

Alleviate back, hip, neck and leg pain.

Strengthen and tone your whole body.

Improve your general fitness.

As we get older, we need to continue to focus on good body management: things don't happen just because we want them to.

Pilates is a pathway to feeling great and enjoying the physical aspect of your life.

Classes start on 2nd April at the Walpole Community Hall 9am Tuesdays and Thursdays.

*~Anna-Marie Edwy-smith*



## Completion of upgraded boat ramp



The Department of Biodiversity, Conservation, and Attractions (DBCA) in partnership with the Shire of Denmark are delighted to announce the completion of the upgraded boat ramp and new accessible paddle facility at Walpole and Nornalup Inlets Marine Park.

All visitors can now safely launch their dinghies, kayaks, or stand-up paddle boards to explore the scenic Frankland River up to Monastery Landing, which was upgraded in late 2023.



The new Nornalup jetty features an all-abilities ramp and boardwalk connecting the carpark to the platform, complete with seating and an accessible paddle launch chute. This facility accommodates people of all abilities who want to paddle the river and explore the Walpole Nornalup Marine Park.

Minor landscaping and asphalt sealing works will be completed early April, marking the final stages of this significant project for the community which was funded through the WA Recovery Plan.

The ramp will be open for public use from Friday, March 29th.

*~Department of Biodiversity, Conservation and Attractions*

# PROHIBITED BURNING EXTENDED

**BOTH ZONES 6 AND 8**  
**MANJIMUP PEMBERTON QUINNINUP**  
**NORTHCLIFFE WALPOLE**  
**UNTIL 12 APRIL 2024**



**LEGAL AID**  
WESTERN AUSTRALIA

**Work off your court fines**

*You may be eligible for the work and development permit if you are:*

- Experiencing financial hardship
- Have been or might be subjected or exposed to family violence
- Have a mental illness
- Have a disability
- Are homeless
- Are experiencing alcohol or drug use problems

Ask Us How **9840 1395**

 **Walpole Community Resource Centre**  
*Your local connection*

24 Latham Avenue, Walpole



# Your weekly fOOD and coffee guide



What's on offer in and around Walpole this week...

<b>Bow Bridge Road House</b> <i>'Homemade burgers, coffee, cakes, fish and chips, liquor and groceries.'</i> Open Wed-Fri, 9am-5:00pm, Sat-Sun, 9am-4pm, closed Mon-Tues.	9840 8062
<b>Walpole Hotel/ Motel</b> <i>'Open for Lunch and Dinner 7 days a week'</i> Mon-Fri Lunch 12pm-2pm, Dinner 7 days a week, 6pm - 8pm, Cnr Boronia Ave & South West Hwy, Walpole	9840 1023
<b>Peaceful Bay Fish and Chips</b> <i>'Open everyday except Christmas'</i> Mon-Sat 11:30am-5pm, Sun 11:30am-4pm	9840 8060
<b>BP Roadhouse Walpole</b> <i>'food to go or dine in, best coffee'</i>	9840 1802
<b>Tree Top Restaurant</b> <i>'a la Carte Dining'</i> Tree Top Restaurant, Tree Top Walk Motel – a la Carte dining 6 nights (not Sundays) 45 Nockolds Street, Walpole 45-50 Nockolds Street Walpole	9840 1444

## Nature Notes: Western Banjo Frog



The Western Banjo Frog or *Limnodynastes dorsalis* is found in the southwest of WA. It is also called bullfrog or pobblebonk. The sound it makes during winter or spring is like a plucked banjo string. It is a fairly robust, large frog up to 7.5cm although females can be larger at 8.5cm. It is grey or grey-green with numerous patches of brown and a yellow stripe running down its back. The red patches underneath in the groin area is what distinguishes the western type of this frog. It also has a glandular ridge at the corner of the mouth and large poisonous glands on the upper side of the calves. The male has more powerful arms than the female and develops a dark throat and nuptial pads during the breeding season.

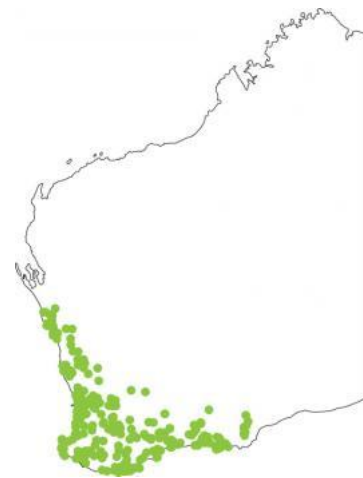
Calling can begin as early as May in the northern part of its range. Breeding continues to early December.

During mating the female beats the surface of the water to produce a white foamy mass. The eggs are laid on the base of this foam raft which is usually hidden under overhanging vegetation. The raft is anchored and it is unusual to see free floating rafts on the water.

Tadpoles are relatively large, growing up to 8cm in length. They have dark brown backs and black spots and the underneath has a blue hue. Tails and fins are transparent. The tadpoles are found in deep, permanent water and development into froglets is slow. They emerge from early summer to April. Adult and juvenile Western Banjo Frogs are often encountered quite a distance from water.

They are good at burrowing and spend much of the year buried in sandy soils away from breeding sites. They are found from Kalbarri to Cape Arid.

~Alison Kenworthy



We don't need a banjo in order to make a banjo sound.



# Programme launched for Invest Great Southern Conference



Invest Great Southern conference organisers are proud to unveil an exciting lineup of speakers for this inaugural event, taking place at the Albany Entertainment Centre on 8-9th May 2024.

Under the banner of “A forward look at what is possible,” this

conference marks a pivotal moment for the Great Southern region, offering a unique convergence of ideas geared towards economic development and investment opportunities.

Invest Great Southern: A forward look at what is possible is presented by the Albany Chamber of Commerce and Industry (ACCI) in collaboration with the City of Albany, Great Southern Development Commission, and Regional Development Australia.

The event will feature keynote speaker Paul Higgins, CEO of EmergentFutures, renowned for his forward-thinking approach to business strategy and planning. With over 20 years of experience as a futurist, Higgins is set to provide attendees with an inspiring glimpse into the potential futures of regional Western Australia and the Great Southern.

Joining him is a diverse array of industry leaders, including Lucy Anderton of AgriFutures Australia; Dr. Natasha Teakle from AgriStart; Stephen Birkbeck, Raintree Estate; Glen Wilson from Vestas; Professor Cobie Rudd of Edith Cowan University; Carolyn Turnbull of Tourism WA; April Walker, WA Spaceport; and Glenda Stirling of Grange Resources among many others.

Michael Carter, of the Chamber of Commerce and Industry WA (CCIWA) will share insights into trade, investment, and workplace relations, contributing to a comprehensive exploration of the region's business landscape.

Discussions and presentations will be framed across six key pillars of industry growth for the region: Agriculture; Mining, Renewable energy; Housing and Planning; Education and Tourism.


Attendees can anticipate unparalleled networking opportunities and a showcase of local and Western Australian businesses at our exhibition booths. The two-day conference will be wrapped up with an exclusive tour of the region’s top tourism attractions that highlight the natural beauty and cultural richness of the Great Southern, offering attendees a glimpse into the lifestyle and potential the area holds for investors and residents alike.

Albany CCI CEO, Kristen Pyrz-Brown said that “Invest Great Southern is more than a conference; it’s a commitment to the economic development and prosperity of the Albany region and the broader Great Southern. It’s an invitation to be part of a collective vision that embraces growth, innovation, and sustainability.”

Don’t miss this opportunity to be at the forefront of shaping the future of the Great Southern.

View the conference programme and all other event and ticketing details at:

[albanycci.com.au/investgreatsouthern](http://albanycci.com.au/investgreatsouthern)



**Walpole Community Resource Centre**

**DID YOU KNOW?**

**Walpole CRC is your local access point for the following Government Agencies**

- Local government
  - Shire of Manjimup
  - Shire of Denmark
- Australia Electoral Commission
- Department of Humans Services
  - Centrelink
  - Child Support
  - Medicare
  - Age care
- Department of Primary Industries
- Department of Transport
- Department of Fisheries
- Department of Veterans Affair

Great Sothern Development Commission  
South West Development Commission

## ACCOUNTING

### DENMARK ACCOUNTING SERVICES

CPA Accountant & Registered Tax Agent

- Income tax, BAS & FBT returns, SMSF & Trust
- Interim & Annual financial statements
- Tax planning & advice
- Reseller of MYOB & Reckon
- Mobile service available

T: (08) 9848 1301  
reception@denmarkaccounting.com.au

Unit 7 Palm Court, 63 Strickland St  
Denmark WA 6333



Denmark Accounting Services  
is a CPA Practice & Registered  
Tax Agent

## BUILDING & TRADE



**B** Bathroom  
Decor & Tiles  
TILES VANITIES SPAS BATHS TAPS SINKS

The Homemart Centre  
143 Lockyer Ave, Albany  
**Phone: 9842 2955**  
Email: admin@bathroomdecoralbany.com.au



For all of your business, personal and SMSF  
accounting & taxation needs

Steele is regularly in Walpole and happy to  
meet at your premises or Walpole Lodge.

M: 0429 500 461 P: 9842 9677

E: steele@gmtaxation.com.au

Shop 1, 133 Lockyer Avenue, Albany WA 6330

## ALLFLOW SERVICES

PL10376 | GF 15084

**PLUMBING | GAS | ROOF PLUMBING**  
All aspects of Plumbing, Gas Fitting  
& Roof Plumbing

**MARK SCOTT**  
**0408 370 573**  
admin@allflowservices.com.au

## AGRICULTURE

**IN STOCK NOW**

**KIOTI** **DEUTZ FAHR**

**TRACTORS & MACHINERY**  
SALES - SERVICE - REPAIRS  
FULLY EQUIPPED WORKSHOP  
FULLY MOBILE  
FINANCE AVAILABLE

CALL TRENT **0448 415 138**

Locally Owned & Operated  
Serving the Great Southern

**DENMARK DIESEL & AGRICULTURAL REPAIRS**

**Synab Plumbing Gas**

**0422301302**  
**Synabplg@gmail.com**

PL9679 GF01899

## AUTO & MARINE

**Walpole MECHANICAL & TYRES**

13 Vista Street  
WALPOLE WA 6398

**9840 1297**

For all your vehicle needs:  
Light & heavy vehicle servicing, field service,  
repairs, tyres, batteries, welding  
4x4 equipment & much more.  
**08 9840 1297**  
**A/h 0419 863 601**

**wmt6398@outlook.com**  
**MRB11054**

**Peaceful Bay BUILDING SERVICE**

- Home Renovations & Extensions
- Sheds Supplied & Erected
- Mini Crawler Crane Hire
- MBA WA Member

www.PeacefulBayBuilding.com  
Peter Cox 0407 387 241 peterpbbs@gmail.com  
Lesley Cox 0408 917 398 lesleypbbs@gmail.com

**When it come to Sheds, We've got you covered**

- Carports
- Workshops
- Farm Sheds
- Hay Sheds
- Shearing Sheds
- Livestock Sheds
- Garden Sheds
- Dairy Sheds

**Wide Span Sheds**  
No Compromise Steel Building Solutions.  
LOCAL AUTHORISED REFERRAL AGENT

Mini Crawler Crane Hire

**BUILDING & TRADE**

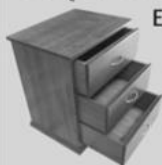
**Skip Fencing & Walpole Steel Fabrications**

E: walpolesteel@westnet.com.au

**STEVEN SKIPPINGS**

Work: 9840 1640

Mob: 0428 401 640



Contract Fencing all types, Squirrel Hire, Post Driving, Sheds all types, Steel Patios, Gates, Stock Yards, Cattle Crushes, Hay Feeders, Custom Trailers, All Steel Fabrication, Mobile Welding Timber Machining slabs & Fine Custom Furniture & Tables

**BUILDING & TRADE**

**WALPOLE CONCRETE**

**YOUR LOCAL SUPPLIER FOR...**

House & Shed Pads + Pre-cast Products + Colourmix Concrete + Septics + L Panels + Storm Water Products + Concrete Accessories



**PHONE  
GREG**

**0466 101 161**



**Kerry Halse 0427 482 437**  
Email: kghalse@outlook.com



17-21 Cockburn Rd  
PO Box 5628  
Albany WA 6332  
Ph: 9842 1533  
Fax: 9842 1833  
www.rainbowft.com.au

Your suppliers for  
**Timber Roof Trusses  
& Wall Frames**



**Thinking about SOLAR?**

- \* SLASH YOUR POWER BILLS
- \* 100% quality materials and workmanship
- \* Affordable local installer
- \* Payback period can be less than 4 years!
- \* ON and OFF Grid Power Systems




Call for a **FREE**, no obligation quote on a Custom Solar System Design  
**0439 692 555**  
DENMARK SOLAR and Renewable Energy  
www.dsrenergy.com

Electrical Contractor 11118

**Andrew Ross**  
**Renovations**  
WARA Lic. 1674  
**Ph: 0419 194 772**

- Asbestos Removal
- House Renovations
- Re-cladding
- Staircases
- Decks • Sheds
- Verandahs
- Re-roofing
- Home restumping

**DENMARK Refrigeration & AIR CONDITIONING**  
AU18684

**Sales, service heating & cooling specialists**

E: office@powleyelectrical.com.au  
Ph: 08 9848 2026  
Unit 2/1058 Middleton St Denmark WA 6333  
PO Box 287 Denmark WA 6333

**DAIKIN FUJITSU Panasonic**

**SLAB N BURL HARDWOODS**

**Clint & Nikki Decke**

Manjimup/Peaceful Bay Showrooms: 9772 4204 or 0429 724 204  
sales@slabnburlhardwoods.com.au  
www.slabnburlhardwoods.com.au

## COMMUNITY SERVICES

St George's Anglican Church  
cnr Vista & Pier, Walpole

All are welcome

**Sunday Service 10am**



Revd Sally Buckley tssf: 9848 2173  
[www.denmarkanglican.org.au](http://www.denmarkanglican.org.au)  
In Walpole: Harold Luxton 9840 1661

## VETERINARY & ANIMAL CARE



**Denmark  
Vet Hospital  
& Paws Surgery Services**

Cattle ultrasound pregnancy testing available, as well as herd synchronisation and artificial insemination. Large range of dog foods available at Denmark Vet Hospital. Small animal consultations at Walpole Community Garden every Wednesday by appointment, call for info.

Dr Richard Reynolds | Dr Claudia O'Connell | Dr Nina Bradshaw  
8 Welsh Street, Denmark, 6333 | (08) 9848 1389  
[denmarkvethospital.com.au](http://denmarkvethospital.com.au)

**Walpole and Nornalup  
St John Ambulance  
Community Transport  
Services**



For bookings, call  
**0447 032 821**



 Walpole  
Community Resource Centre **MEMBERSHIP**

New members of the Walpole Community Resource Centre are always welcome.

Membership has benefits! Take advantage of the generous member discounts that apply to many of your CRC's most popular and useful services.

Tel: 9840 1395

 Walpole  
Community Resource Centre  
*Your local connection*

**You can do it at the CRC!**

### Centre Facilities include;

- Fully serviced offices/ conference/ training rooms
- Walpole Weekly production and printing
- Internet services: wifi /computer use
- Confidential video-conferencing / skype
- Multimedia conversion: DVD/ USB/ mp3/ mp4
- Bookkeeping/ secretarial services
- Photograph and negative printing/scanning
- Wide format printing
- Literary publication: editing/ printing/ binding
- Confidential record shredding
- Document management: scanning/ binding/ laminating/ email
- Document creation including: posters/ flyers/ business cards/ invitations
- Key cutting
- Online purchasing
- Exam supervision
- Dept. Human Services Access Point includes: Centrelink/Medicare/Child Support/Veterans Affairs
- Access to State and Federal Government Department information including: Licensing/ Fisheries/ Education
- Aged Care/ Home Care Packages
- Bus hire
- Local knowledge
- Friendly advice
- Free tea/coffee while you wait/work

**To stay connected to your home, work or business, visit the Walpole CRC**



**We are open Tuesday - Friday 9am - 4pm  
Walpole Central Building**

24 Latham Avenue, Walpole WA

P: 9840 1395

E: [crc@walpole.org.au](mailto:crc@walpole.org.au)

**[www.WalpoleOnline.com](http://www.WalpoleOnline.com)**





**OBR**  
GROUP

Refrigeration • Air Conditioning • Electrical

**FUJITSU**

AUSTRALIA'S FAVOURITE AIR®

*Weekly visits to  
Walpole from Denmark*

Ph. 98 421 072

[admin@obr.net.au](mailto:admin@obr.net.au)

# School Holiday Programme

**Limited spaces**

**For all events, RSVP**

**Email: [reception@walpole.org.au](mailto:reception@walpole.org.au) or call: 9840 1395**



## DENMARK ANIMAL FARM

**Wednesday, 3rd April, 9 am-3 pm**

**Lunch Included at**

**Denmark Farmhouse Cheese**

**Price: \$35**

## PEMBERTON TRAM AND AERIAL ADVENTURE

**Friday 5th April, 9 am - 4 pm**

**Lunch Included**

**Price: \$35**



## BUBBLES WITH GERTRUDE WELLESE

**Wednesday, 10th April, 9:30 am - 11 am**

**Price: \$5**

